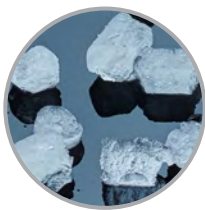




Sealed, Maintenance-Free Bearings Ensure Maximum Reliability and Contribute to a Long Machine Life



Available in Softer, Original Chewable Nugget Ice or Harder, H<sup>2</sup> Nugget Ice



## Nugget Ice



**Original Chewable Nugget**  
Ice Hardness Rating: Soft = 74%  
Dimensions: 3/16" x 3/16" x 3/8"



**H<sup>2</sup> Nugget**  
Ice Hardness Rating: Hard = 87%  
Dimensions: 3/4" x 3/16" x 3/8"

# N1322 - 1300lb Nugget Ice Machine

Prodigy Plus® Nugget Ice Machine

## Features and Benefits

- Available in softer, Original Chewable Nugget Ice and harder, H<sup>2</sup> Nugget Ice
- Sealed, maintenance-free bearings for reduced preventative maintenance and long-lasting performance
- Stainless steel evaporator and auger for maximum durability
- AutoAlert™ indicator lights for better visibility
- Operational footprint among the industry's smallest
- Unit specific QR code for quick access to service manuals, cleaning guides and warranty history
- Front-breathing - No side clearance required for flexible placement
- Smart-Board™ advanced feature module available for additional diagnostic capabilities
- Optional Vari-Smart™ ice level control allows operators to customize ice levels
- Antimicrobial protection guards internal surfaces between cleanings
- A full range of water- and energy-saving features



## 24 Hour Volume Production

### Original Chewable Nugget

Air Cooled		Remote Cooled		Water Cooled	
70°F/21°C	Air	90°F/32°C	70°F/21°C	90°F/32°C	70°F/21°C
50°F/10°C	Water	70°F/21°C	50°F/10°C	70°F/21°C	50°F/10°C
1314/597		1001/455	1360/618	1077/489	1484/675
lb/kg		lb/kg	lb/kg	lb/kg	lb/kg



## 24 Hour Volume Production

### H<sup>2</sup> Nugget

Air Cooled		Remote Cooled		Water Cooled	
70°F/21°C	Air	90°F/32°C	70°F/21°C	90°F/32°C	70°F/21°C
50°F/10°C	Water	70°F/21°C	50°F/10°C	70°F/21°C	50°F/10°C
1199/545		913/415	1191/540	1000/454	1155/525
lb/kg		lb/kg	lb/kg	lb/kg	lb/kg



## Modular Bin Options

Model Number*	Dimensions W" x D" x H"	Capacity lb/kg	Finish	Ship Weight lb/kg
B842S	42 x 34 x 44	778/353	Metallic	190/86
B948S	48 x 34 x 44	893/406	Metallic	209/95
BL1048S	48 x 31 x 54.4	1000/454	Stainless Steel	268/122
BL1360S	60 x 61 x 54.4	1320/599	Stainless Steel	322/147
BL1660S	60 x 31 x 63.4	1660/753	Stainless Steel	340/154

\*Contact Scotsman for bin top requirements.



## Certification



## Warranty

- 3 years parts and labor on all components.
- 5 years parts on the compressor.
- Warranty valid in North, South & Central America for commercial installations.
- Contact factory for warranty in other regions.
- Residential Applications: 1 year parts and labor

# Scotsman®

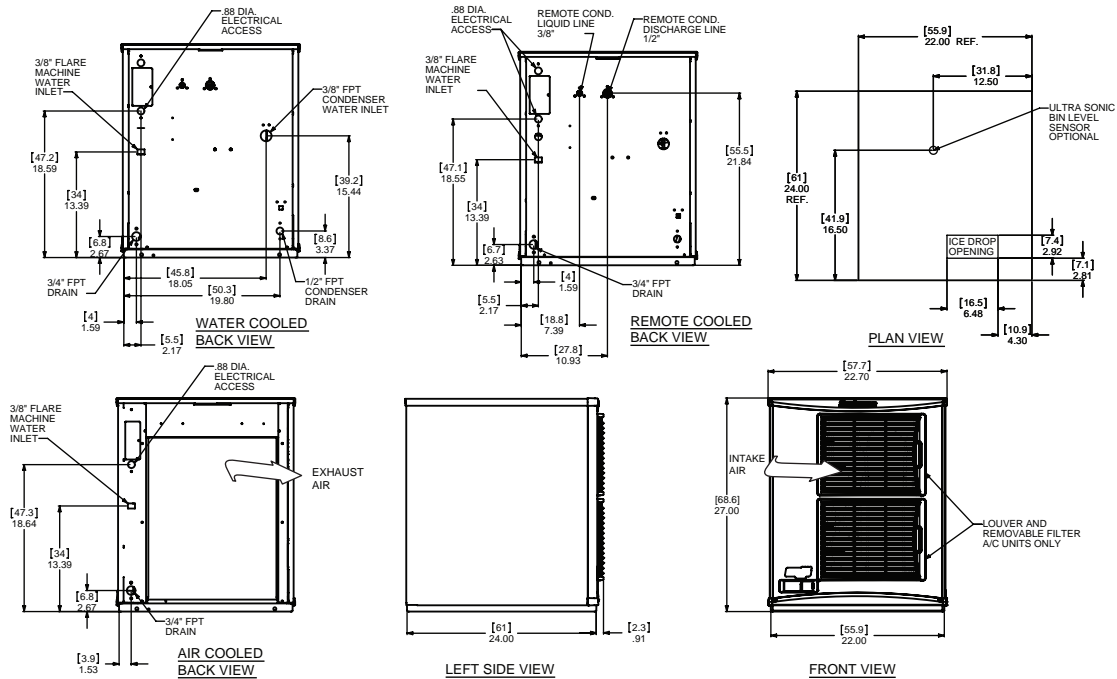
101 Corporate Woods Parkway, Vernon Hills, IL 60061

1-800-SCOTSMAN | Fax: 847-913-9844 | www.scotsman-ice.com | customer.relationship@scotsman-ice.com

N1322 - 1300lb Nugget Ice Machine

# N1322 - 1300lb Nugget Ice Machine

Prodigy Plus® Nugget Ice Machine



## Specifications

							Water Usage		
Model Number	Condenser Unit	Basic Electrical Volts/Hz/Phase	Max. Fuse Size or HACR Circuit Breaker (amps)	Circuit Wires	Min. Circuit Ampacity	Energy Consumption kWh/100 lb (45.4 kg) 90°F(32°C)/70°F(21°C)	Gallons/100 lb (liters/45.4 kg) Potable	Condenser 90°F(32°C)/70°F(21°C)	
soft	NS1322AX-32	Air	208-230/60/1	20	2	14.8	3.78	12.0/45.5	-
	NS1322R-32	Remote	208-230/60/1	30	2	18.4	4.65	12.0/45.5	-
	NS1322WX-32	Water	208-230/60/1	20	2	13.6	3.33	12.0/45.5	82/312
hard	NH1322AX-32	Air	208-230/60/1	20	2	14.8	3.78	12.0/45.5	-
	NH1322R-32	Remote	208-230/60/1	30	2	18.4	4.65	12.0/45.5	-
	NH1322WX-32	Water	208-230/60/1	20	2	13.6	3.33	12.0/45.5	82/312



## All Models

### Dimensions (W x D x H):

Unit:	<b>Individual</b> 22.9" x 24" x 27" (58.2 x 61.0 x 68.6 cm)
	<b>Side by Side</b> 44" x 24" x 27" (111.8 x 61.0 x 68.6 cm)
Shipping Carton:	25.5" x 27.5" x 32.5" (64.8 x 69.9 x 82.6 cm)

Shipping Weight: 225 lb / 102 kg      BTUs per hour: 16,000

Model Number	Refrigerant	Refrigerant Charge (oz)
NS1322AX-32	R290	12.0
NS1322R-32	R-404A	192.0
NS1322WX-32	R290	10.0
NH1322AX-32	R290	12.0
NH1322R-32	R-404A	192.0
NH1322WX-32	R290	10.0



## Accessories

Model Number	Description
KVS	Vari-Smart™ Ice Level Control - Program ice bin levels to match ice needs.
KSB	Smart-Board™ Advanced Control - Use additional operational data for fast diagnosis.
KSB-U	Smart-Board™ Advanced Control with Network - Network capable.
KPAS	Prodigy Advanced Sustainability Kit - Includes KVS and KSB - N
ERC311-32	Remote condenser for N1322R, 208-230V/60/1
BRTE10	Line set, 10ft, brazing required.
BRTE25	Line set, 25ft, brazing required.
BRTE40	Line set, 40ft, brazing required.
BRTE75	Line set, 75ft, brazing required.

Scotsman recommends all ice machines have water filtration. See Scotsman water filter specification sheet for details.



## Operating Requirements

	Minimum	Maximum
Air Temperatures	50°F (10°C)	100°F (38°C)
Water Temperatures	40°F (4.4°C)	100°F (38°C)
Remote Cond. Temps	-20°F (-29°C)	120°F (49°C)
Water Pressures	20 PSIG (1.4 bar)	80 PSIG (5.5 bar)
Electrical Voltage	-5%	+10%

Specifications and design are subject to change without notice.

N1322 - 1300lb Nugget Ice Machine